



<b>CLASIFICATION</b>	Panamá	<b>FLAG</b>	Panamá
<b>YEAR</b>	1970	<b>TENSIONERS</b>	2 x 18 t
<b>DIMENSIONS</b>	99,1 m x 27,5 m	<b>DECK AREA</b>	1.200 m2
<b>MOORING SYSTEM</b>	10-pt mooring	<b>ACCOMMODATION</b>	125 Berths
<b>PIPE LAY SYSTEM</b>	from 4" to 54"	<b>CRANE</b>	CLYDE 42DE 500t

**TRABAJOS MARITIMOS  
INNOVACIÓN Y DESARROLLO**

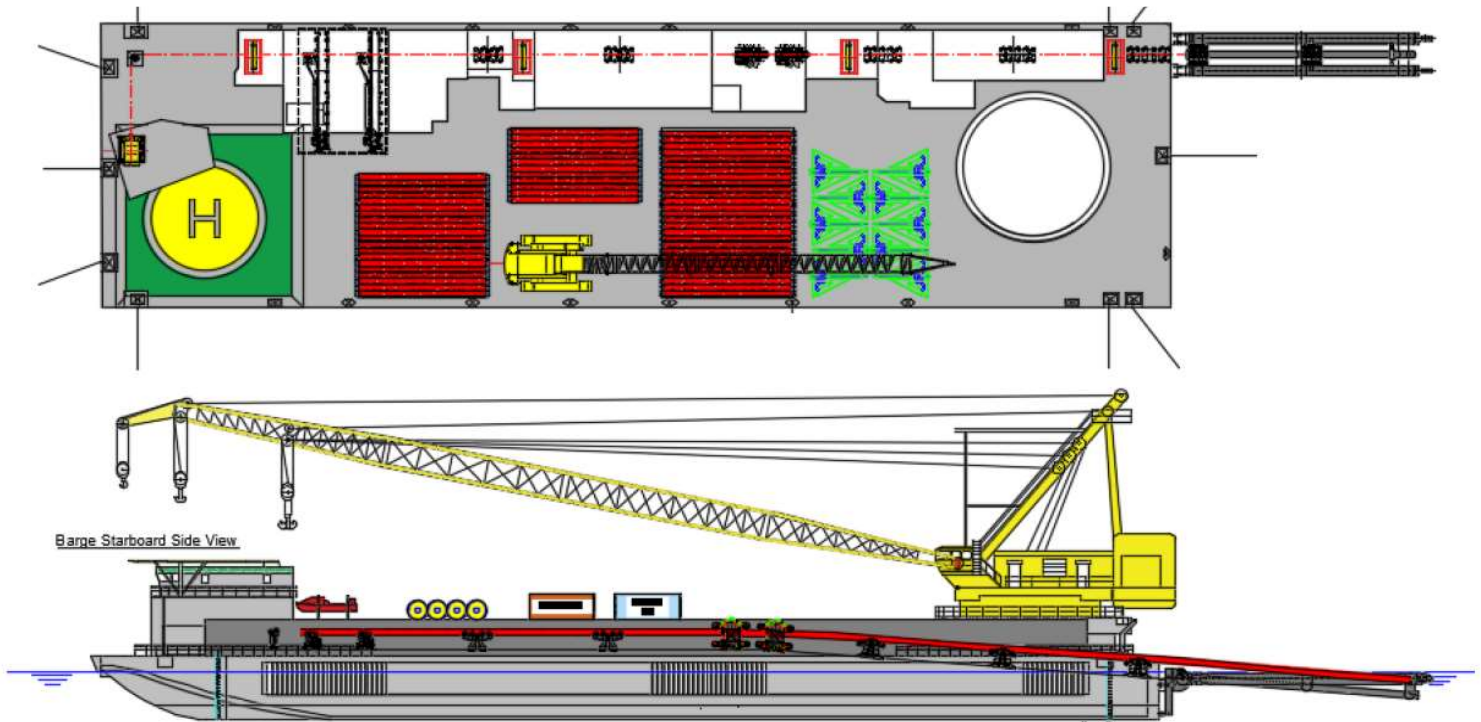
# OXXEAN

CHILE

PRINCIPAL DIMENSIONS	
LOAD	99,09 m
BREADTH	27,43 m
DEPTH MLD	6,71 m
DRAFT MLD	3,31 m
DRAFT MAX	4,66 m
GROSS TONNAGE	5.807 t
NET TONNAGE	1.742 t
DISPLACEMENT MAX	10.700 t
DISPLACEMENT LIGHT	5.389 t
ANCHOR & MOORING SYSTEM	
MOORING ARRANGEMET	20- Points mooring system (10 fixed +10 mooring lines)
MOORING WINCHES	2x Triple drum hydraulic winch Clyde of 110.000 lbs capacity 2x Double drum hydraulic winch skagit RB-90W of 92.200 lbs capacity Integrated monitoring system (CCTV, Tensión & payout meter)- central bridge control
MOORING WIRES	10x44mm betwee 600m (lateral) and 900m (bow/stern)
ANCHORS	10x 10t Flipper delta Anchors + 2x emergency anchors
MACHINERY	
DIESEL GENERATION SET	3 x 350 kW- - CATERPILAR D379 – 450V/60Hz
EMERGENCY GENERATOR SET	1x 150 kW- - CATERPILAR D336 – 450V/60Hz
COMPRESSORS	3 x 120lb Atlas Copco, 1 x130 lb Atlas Copco, 2 x 120lb Sulaire/Caterpillar
FUEL OIL CONSUMPTION	Berth: approx. 1.0 m3/day, Pipelay: approx.3,5 m3/day
EQUIPMENT & PUMP	
FUEL OIL PUMP	1 x 7m3/h
FRESH WATER PUMP	2 x 7m3/h
BALLAST WATER PUMP	2 x 450 m3/h
TANK CAPACITY	
FUEL OIL	683 m3
FRESH WATER	4.145 m3
POTABLE WATER	589 m3
BALLAST WATER	3.630 m3
ACCOMMODATION: 125 BERTHS	
TWO-PERSON OFFICER BERTH	1 x (2) persons
FOUR –PERSON OFFICER BERTH	4 x (4) persons
FOUR-PERSON BERTH	26 x (4) persons
OTHER BERTH CAPACITY	1 x (6) persons
OFFICES	2 x (3) persons
MEETING ROOM	2 x (12) persons
SAFETY	
LIFE RAFTS	10 x 25 persons
FAST RESCUE BOAT	1 x 6 persons
FIRE PUMP	1 x 72 m3/h
EMERGENCY FIRE PUMP	1 x 20 m3/h
TELECOM	
RADIO STATION	2 x VHF + 1 x HF

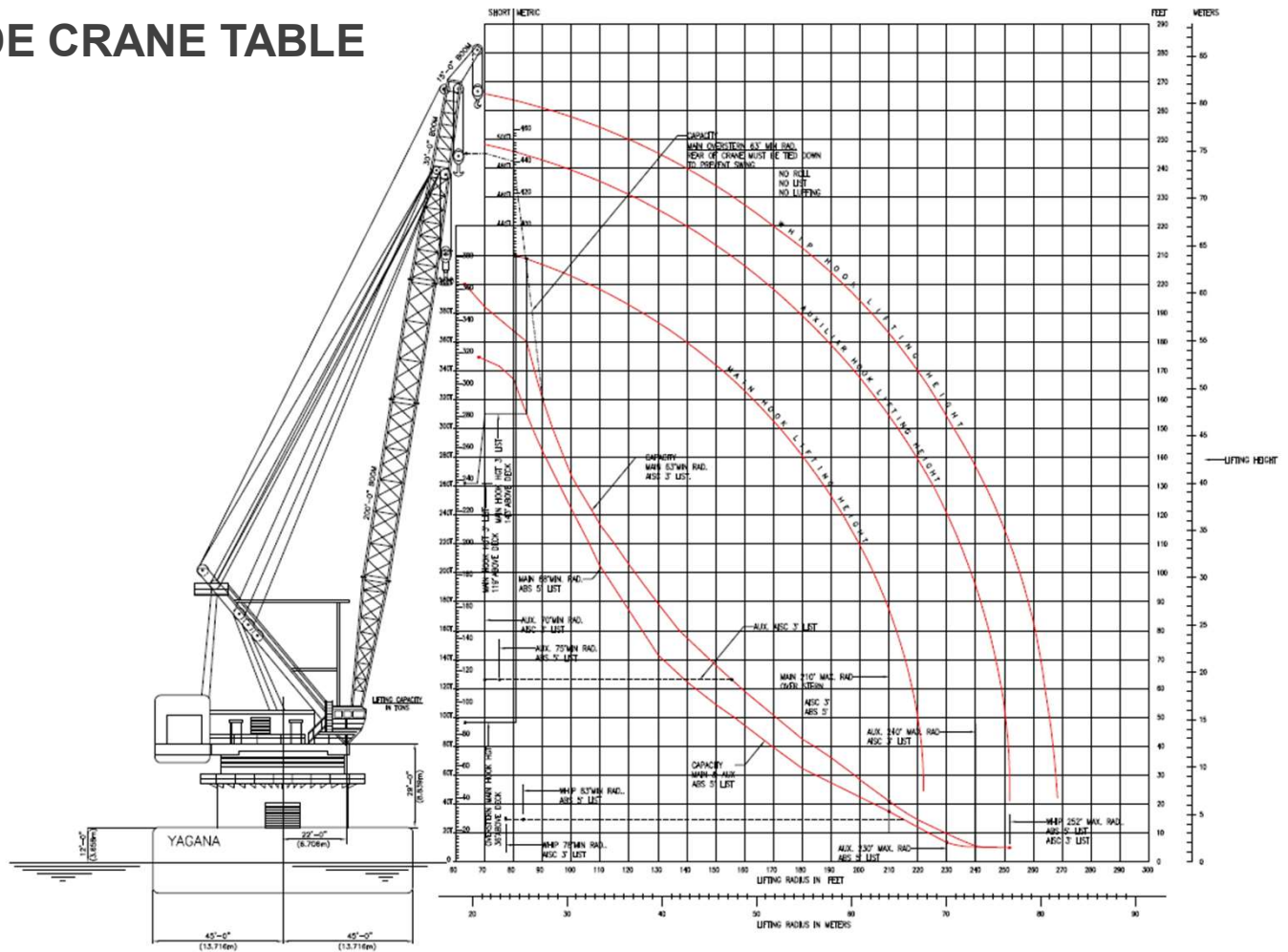
# OXXEAN

CHILE



<b>DECK</b>	
DECK STRENGTH	10 t/m2
DECK AREA	Approx. 1.200 m2
DECK TUGGER WINCHES	2 x 5t
<b>PIPELAY</b>	
CAPACITY	From 4" to 54"
TENSIONER	2 x 18t – RASCO T40
A/R WINCH	1x 45t – MANITOWOC 390 – 36 m/min – 41 mm wire
STINGER	2 x 24 m Floating stinger sections (Ballast command, Depth meter, subsea camera)
WORK STATIONS	5 Work stations (Typ. 3x welding, 1x NDT/repair, 1x field joint coating)
WELDING SYSTEM	Can accommodate manual, semi- automatic and fully automatic and fully automatic
<b>CRANES</b>	
<b>MAIN CRANE</b>	CLYDE 42 DE
	Capacity:
	500st a 20 m – Stationary
	400st a 24 m- Fully revolving
	Boom length: 60 m Main – 70 m aux. -75 m Whip
1x 10 t Tugger winch for hook control	
4 x 5t Tugger winches for load control	
<b>CRAWLER CRANE</b>	MANITOWOXC 3900 w
	Capacity: 90t at 6m
	35m Boom length
<b>NAVIGATION SYSTEM</b>	
GYRO COMPASS	1 x SPERY
ECO- DEPTH SOUNDER	1X FURUNO FCV-S-81-L

## CLYDE CRANE TABLE



NOTE:  
 1.- FOR CAPACITY RATING, RAD & LIFTING HEIGHT OF ASS. 5' LIST  
 REFER TO CLYDE INSTRUCTION MANUAL, DWS N° CH 3034-103-L.  
 2.- DRAWING COPY SANTA FE ENGINEERING SERVICES  
 N° 15-30-047 REV.0 4/2/1975



TRABAJOS MARITIMOS  
 INNOVACIÓN Y DESARROLLO